



Fire door products

Commercial door operators,
release devices and accessories



LiftMaster

Providing fail-safe performance

Fire doors and shutters are found in virtually all types of commercial buildings including manufacturing facilities, warehouses, hospitals, stadiums, sports arenas, convention centers and food court areas. They serve as physical barriers to stop the spread of fire and smoke from one area to another.

LiftMaster fire door products are developed as retrofit solutions to enhance the performance of these safety barriers without requiring purchase and installation of a new door.

LiftMaster assists with the retrofit assessment process, and provides a single package certified system spec'd to meet the exact needs of each customer. They also provide education and training support on LiftMaster fire door products to ensure regulations are being met and installations are safe and pass inspection.

Ultimately, LiftMaster fire door products are designed as an affordable, compliant solution to minimize property damage and provide increased safety for all building occupants.

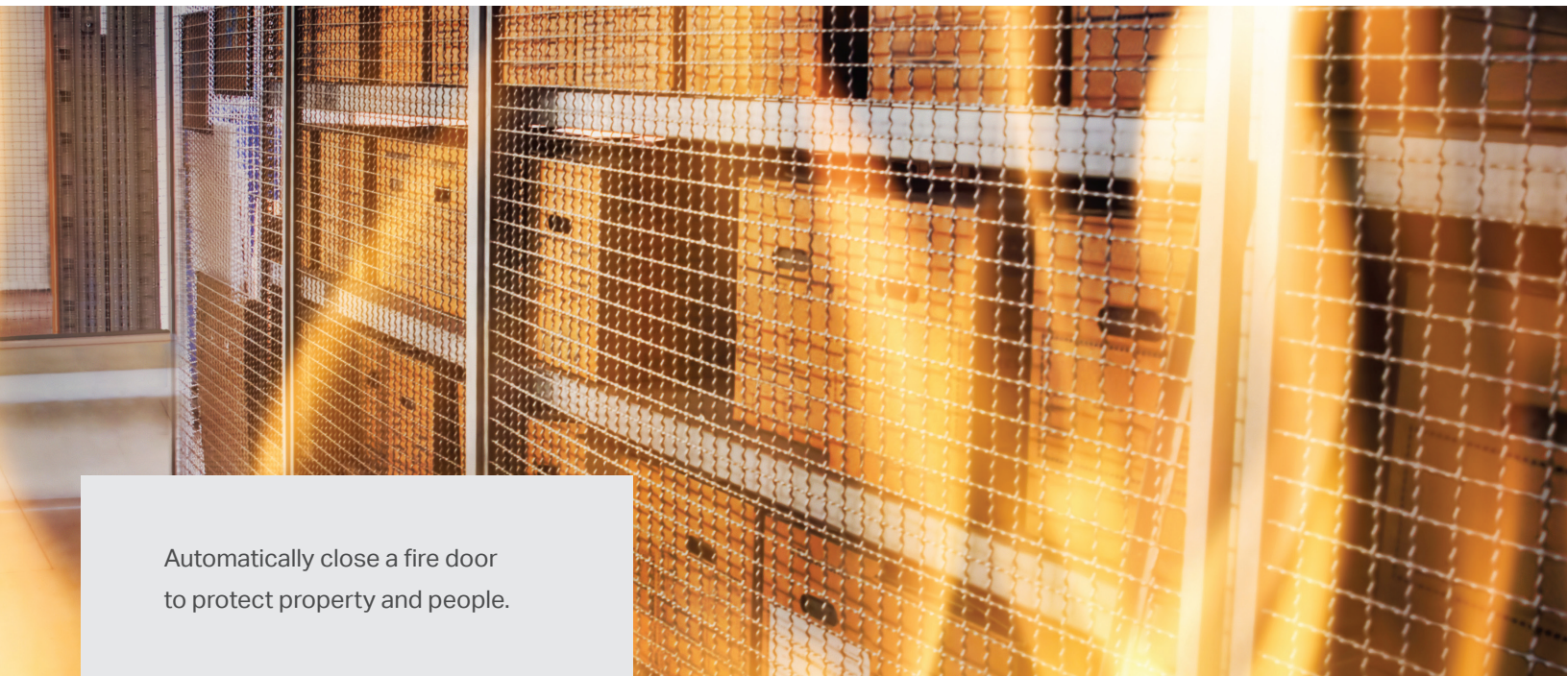




+



The LiftMaster team of experts can put together a fire related solution to meet the needs of any application.



Automatically close a fire door to protect property and people.

Fire door operators

FDC RETRO



Automated fire door controller

The Automated Fire Door Controller provides a motorized fire-door solution, without the loss of spring tension, for added safety when dealing with high pedestrian traffic.

Features include:

- Time-delayed automatic closing
- Monitored 72-hour battery backup
- Low-battery warning
- Programmable closing-function selection
- Keyed test station
- Electronic thermal sensors (field installed)
- Detector/alarm input
- Adjustable linear-driven limit switches
- 3-button open/close/stop control station
- NEMA 1 enclosure
- UL® Listed (UL325) regulatory label support/tracking

FDHS16LIFTRETRO



Manual fire door operator

The LiftMaster Retrofit Manual Fire Door Hoist Operator provides manual door operation using a floor level hand chain allowing a user to open and close their fire door with ease.

Features include:

- Spring loaded release arm
- Adjustable governor
- Automatic closing without loss of spring tension
- Left or right side door mounting
- Holding brake

Release devices

LM21AFCB



Advanced fire control release device

The AFCB release device is designed to be used in conjunction with a standard commercial door operator to provide a fully automated door closing system. For use with motorized doors incorporating a reversing electric safety edge, this 120VAC device can power up to 4 smoke detectors and 2 horn/strobes. This system combines state-of-the-art functionality and advanced features typically found on special-order fire door operators.

Features include:

- UL864/ULC-S527/S533 Listed
- Programmable DIP switch delay setting – either 10, 20, 30, 60 second delay of door release to permit passage clearance

Plus:

- Internal battery backup system
- Obstruction cycling – working in

- conjunction with the door's electrical safety edge reverses the door if an obstruction is encountered
- Motor voltage sensing
- Test key switch – permits floor-level testing of the system

LM21XPBB



Extended performance release device

Versatility allows the XPBB release device to operate on 120VAC, 24VAC, or 24VDC power sources. Internal Battery Backup allows the release device to stand-alone from the fire alarm system and act independently in the event of a power outage. The system can provide 24VDC power for up to 4 smoke detectors and 2 horn strobes mounted on either side of the door. Programmable delay settings, close door detection, diagnostic LEDs, localized testing and reset capabilities are all also standard.

Features include:

- UL864/ULC-S527/S533 Listed
- Programmable DIP switch delay setting – either 10, 20, 30, 60 second delay of door release to permit passage clearance

Plus:

- On board diagnostic LEDs for easy trouble shooting
- Inputs for normally open 2- or 4-wire detectors and 4-wire normally closed detectors

- Trouble and alarm relays for communication with the fire alarm control panel, if required
- Audible trouble sounder to indicate when the release device is not operational
- Testing function allows routine fire door testing without requiring activation of the smoke detector

LM21XP



High performance release device

The XP release device provides a fail-safe release mechanism for non-motorized doors and acts as an interface between the door and fire alarm system. The device requires 24VDC power from an approved UL1481 regulated power supply with Battery Backup, such as a fire alarm control panel. Therefore, installation will require coordination with a fire panel installer.

Features include:

- UL864/ULC-S527/S533 Listed
- Programmable DIP switch delay setting – either 10, 20, 30, 60 second delay of door release to permit passage clearance

Plus:

- On board diagnostic LEDs for early trouble shooting
- Close door detection – prevents door

- release if the door is kept in the closed position and eliminates door reset service calls or potential system damage
- Testing function allows routine fire door testing without requiring activation of the central alarm system; easy reset function returns the device to standby state

Accessories

**LMPD24-2W / LMPD24-4W
LMPDT24-2W / LMPDT24-4W**



Photoelectric smoke detector: 2 wire / 4 wire

Photoelectric & thermal smoke detector: 2 wire/ 4 wire

All models incorporate a state-of-the-art optical sensing chamber and an advanced microprocessor. The microprocessor allows the detector to automatically adjust its sensitivity back to the factory setting when it becomes more sensitive due to contaminants settling in its chamber.

Models LMPDT24-2W and LMPDT24-4W also feature a restorable, built-in, fixed temperature (135°F) thermal detector and are also capable of sensing a freeze condition if the temperature is below 41°F.

Installation of the LMPD24-2W, LMPD24-4W, LMPDT24-2W, and LMPDT24-4W detectors is simplified by the use of a mounting base that may be pre-wired to the system.

Features include:

- Large wire entry port
- In-line terminals with SEMS screws
- Mounts to octagonal and single-gang back boxes, 4-square back boxes, or direct to ceiling
- Stop-Drop 'N Lock attachment to base
- Removable detector cover and chamber
- Wide-angle, dual-color LED indication
- Built-in test switch

LMHS24W / LMHS24R



White horn strobe / red horn "FIRE" strobe

Strobes and horns provide audible and visual notification to deliver an alert of the door status. Combination products, such as horn-strobes, provide dual alerts.

02-109FDC



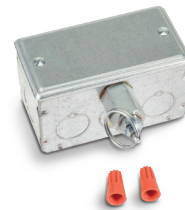
Fire door test key switch

Utilizing the test position of the key switch simulates an alarm signal, to test the operation of the Fire Door Operator.

Features include:

- Surface or flush mount
- Includes 2 keys
- Allows for testing without an actual emergency
- For use with the FDCRETRO Operator

71-17148



Retrofit fuse link kit

Allows you to retrofit a switch in any convenient location to interface with an existing fuse link arrangement. For applications that have an existing fuse link system, where an electric alarm signal is now required, this switch allows you to interface with the motorized fire door operator.



Automated fire door controller

Fire door test key switch

Audible/visual alert

Control station

Monitored photoelectric sensors



Support at every step

Our team of industry experts provides industry-leading technical support. From initial specifications to post-installation, we work with your dealer to determine the best solution for your facility.

Email the experts at

Clay.Norman@LiftMaster.com



Specification review

Made-to-order and specialty operators



Application interpretation

Retrofit fire doors and architect specifications



Connectivity consultation

Integrated hardware and software support



System integration

Integrated hardware and software support

Learn more

Visit LiftMaster.com/fire-door-products

© 2022 The Chamberlain Group, LLC. All Rights Reserved.

LiftMaster, the Liftmaster logo, myQ and the myQ logo are registered trademarks of The Chamberlain Group, LLC. UL® and the UL logo are trademarks of UL LLC. Wi-Fi® is a registered trademark of Wi-Fi Alliance. LMCDENBRFDP 6/22

CGI IS AN ISO9001 REGISTERED COMPANY



IC/FCC Certified

CGI reserves the right to make design or specification changes without notice.